

# 10 BRYANT

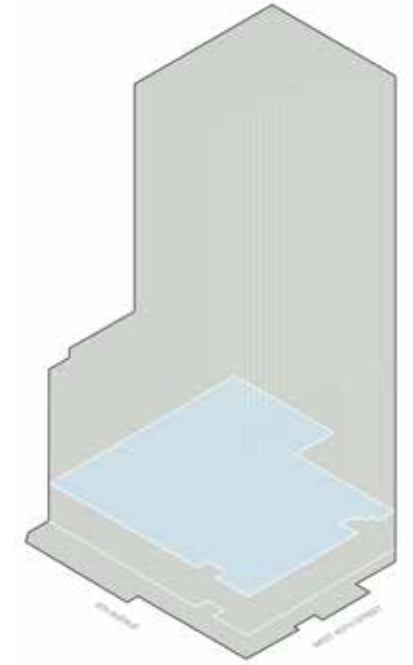
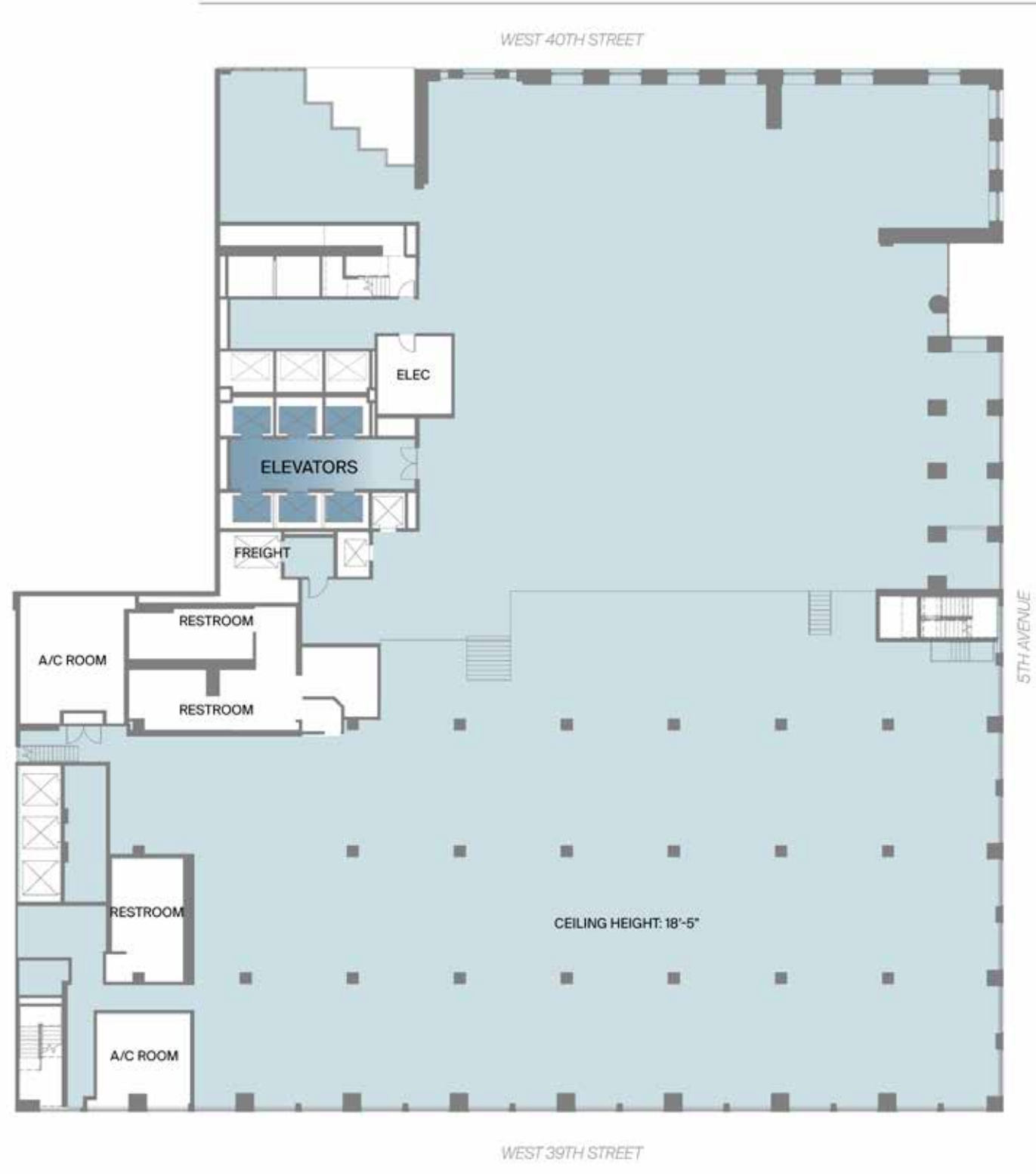
FLOOR PLANS | FLOORS 3-11

*Located at 452 Fifth Avenue*



# FLOOR 3

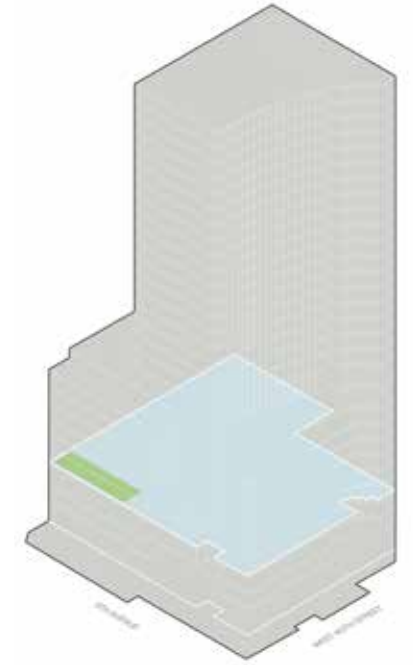
41,063 RSF  
Typical Slab Heights: 13'4"





# FLOOR 4

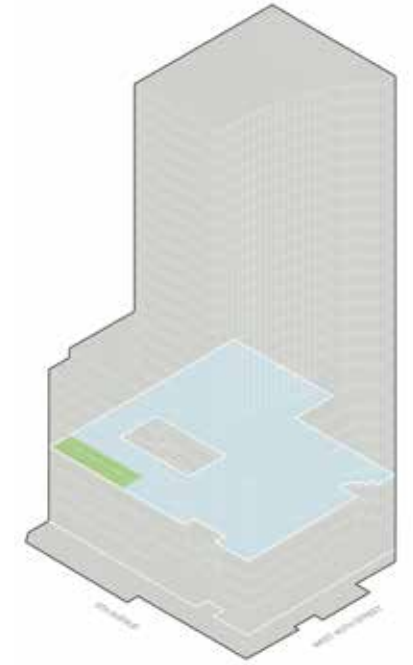
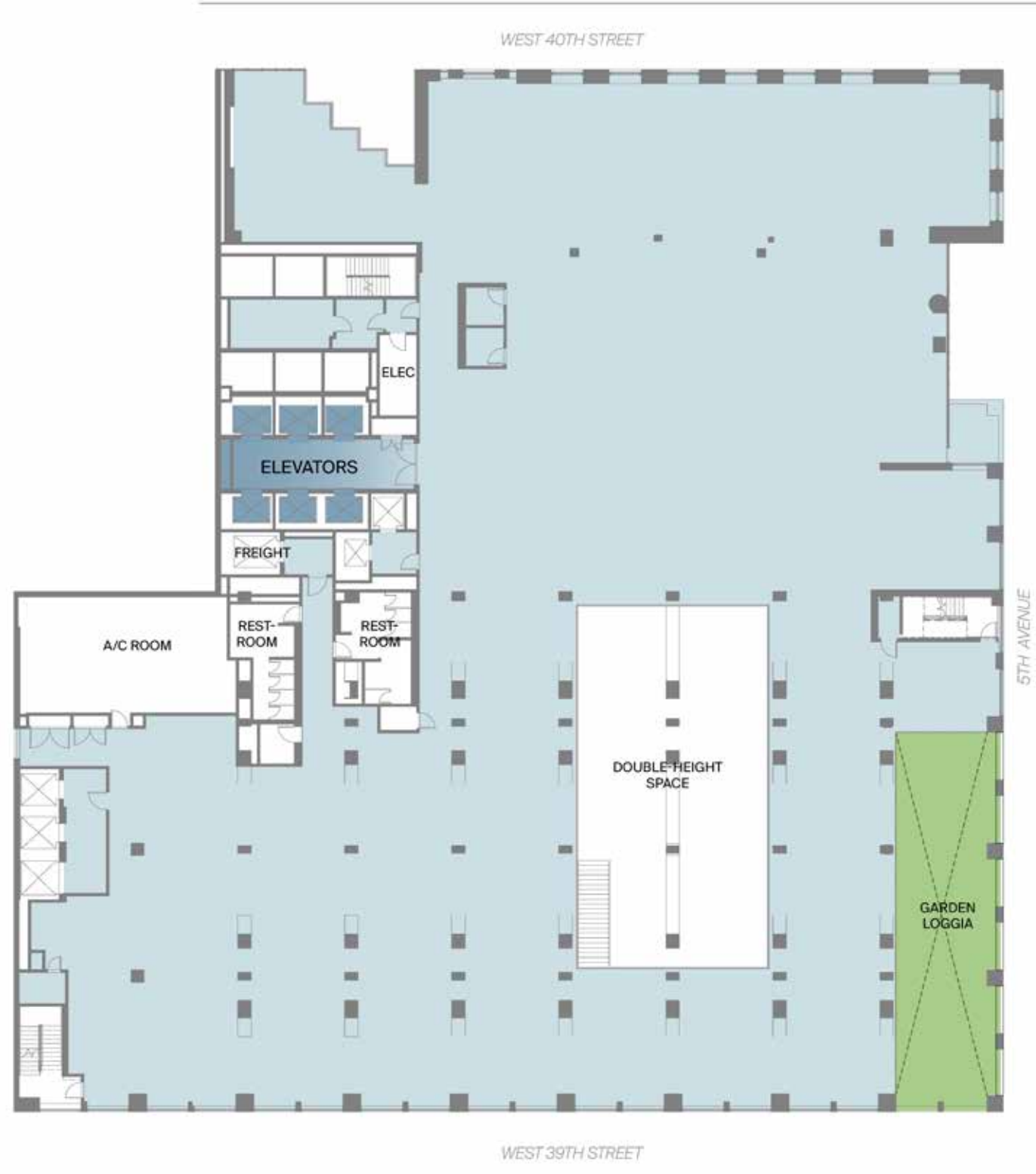
41,304 RSF  
Typical Slab Heights: 13'4"





# FLOOR 5

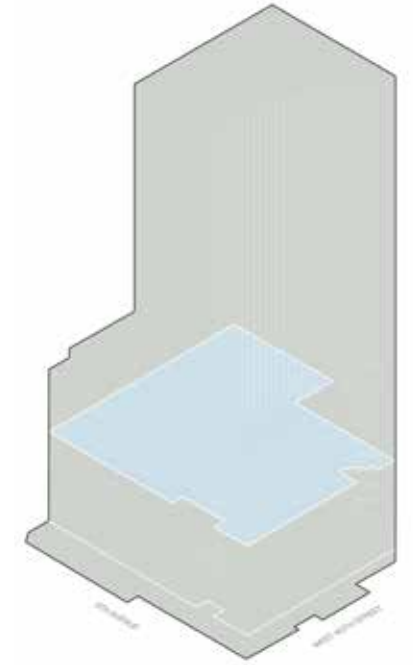
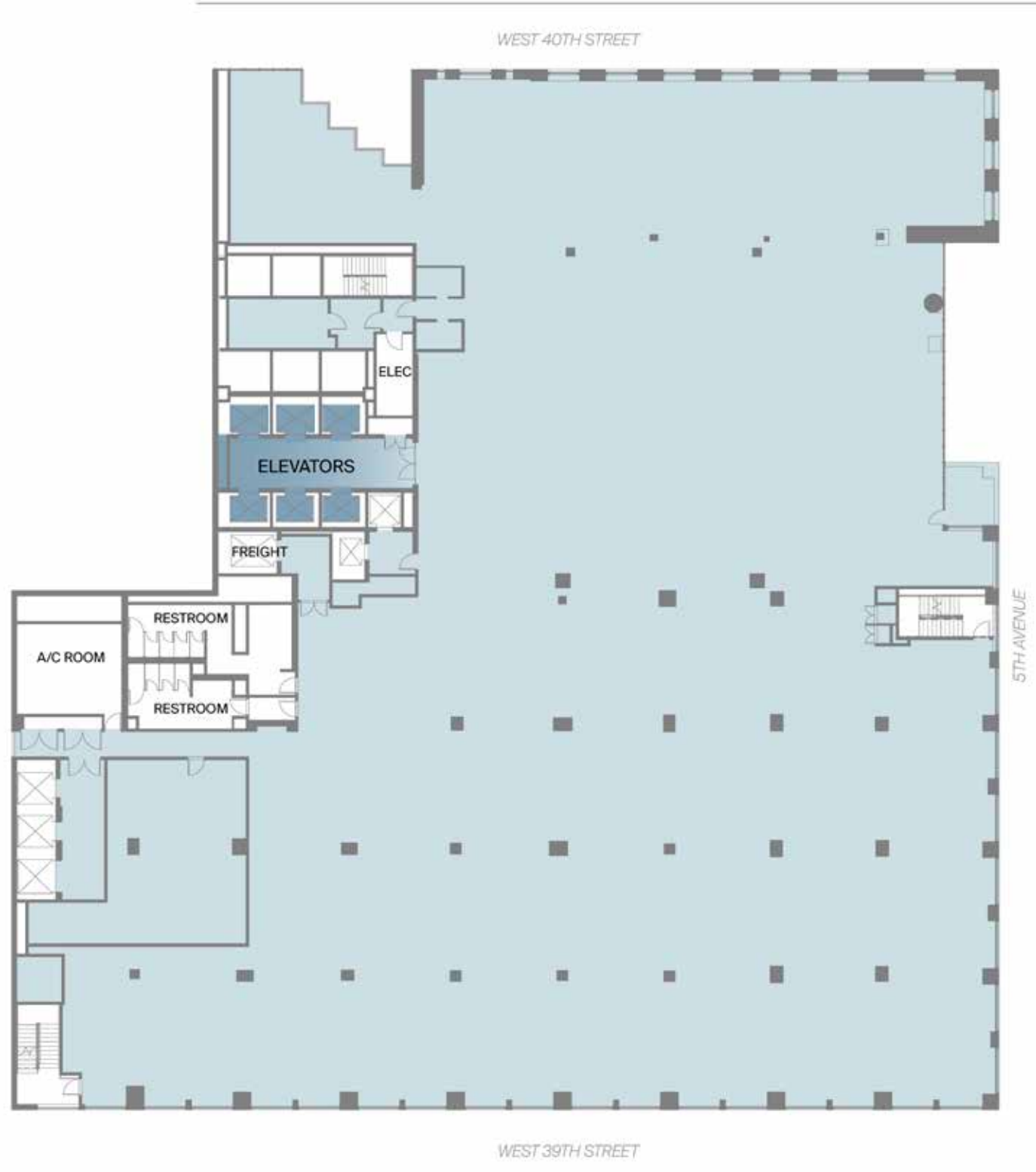
41,087 RSF  
Typical Slab Heights: 13'4"





# FLOOR 6

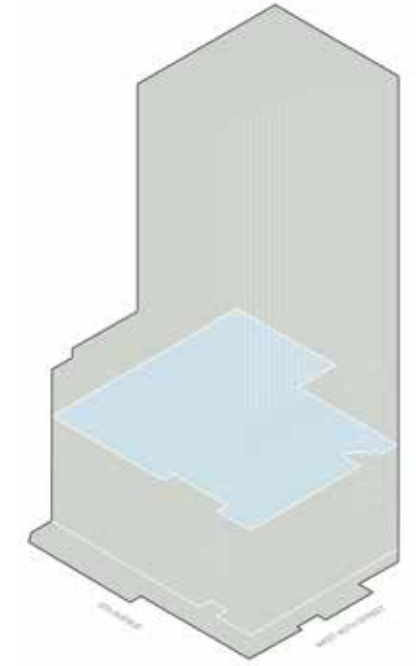
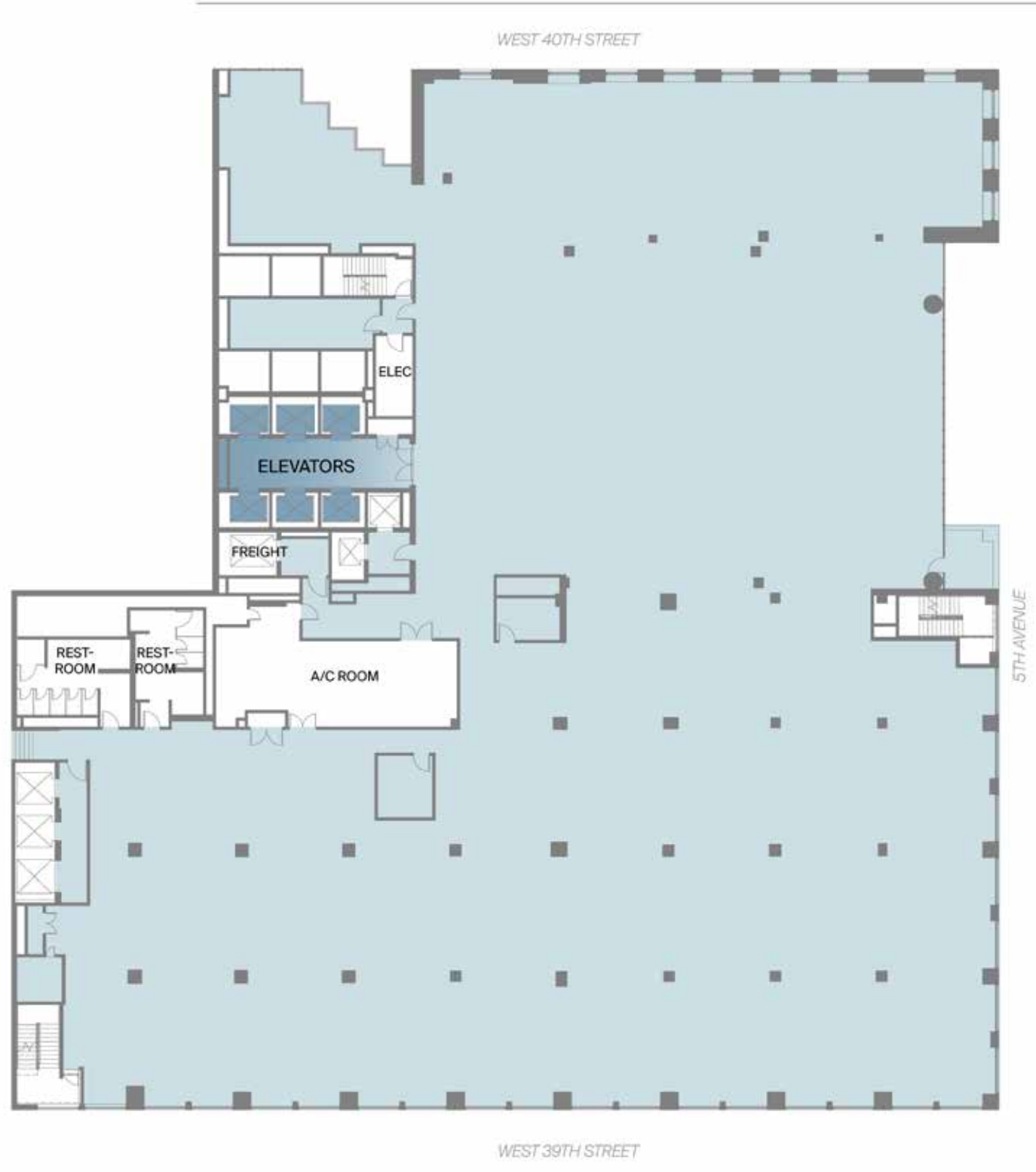
41,202 RSF  
Typical Slab Heights: 13'4"





# FLOOR 7

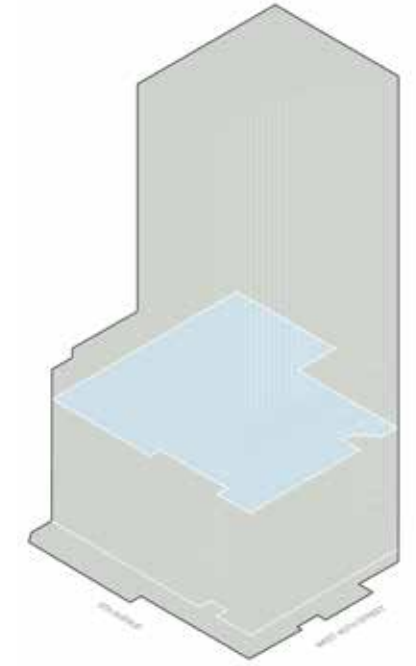
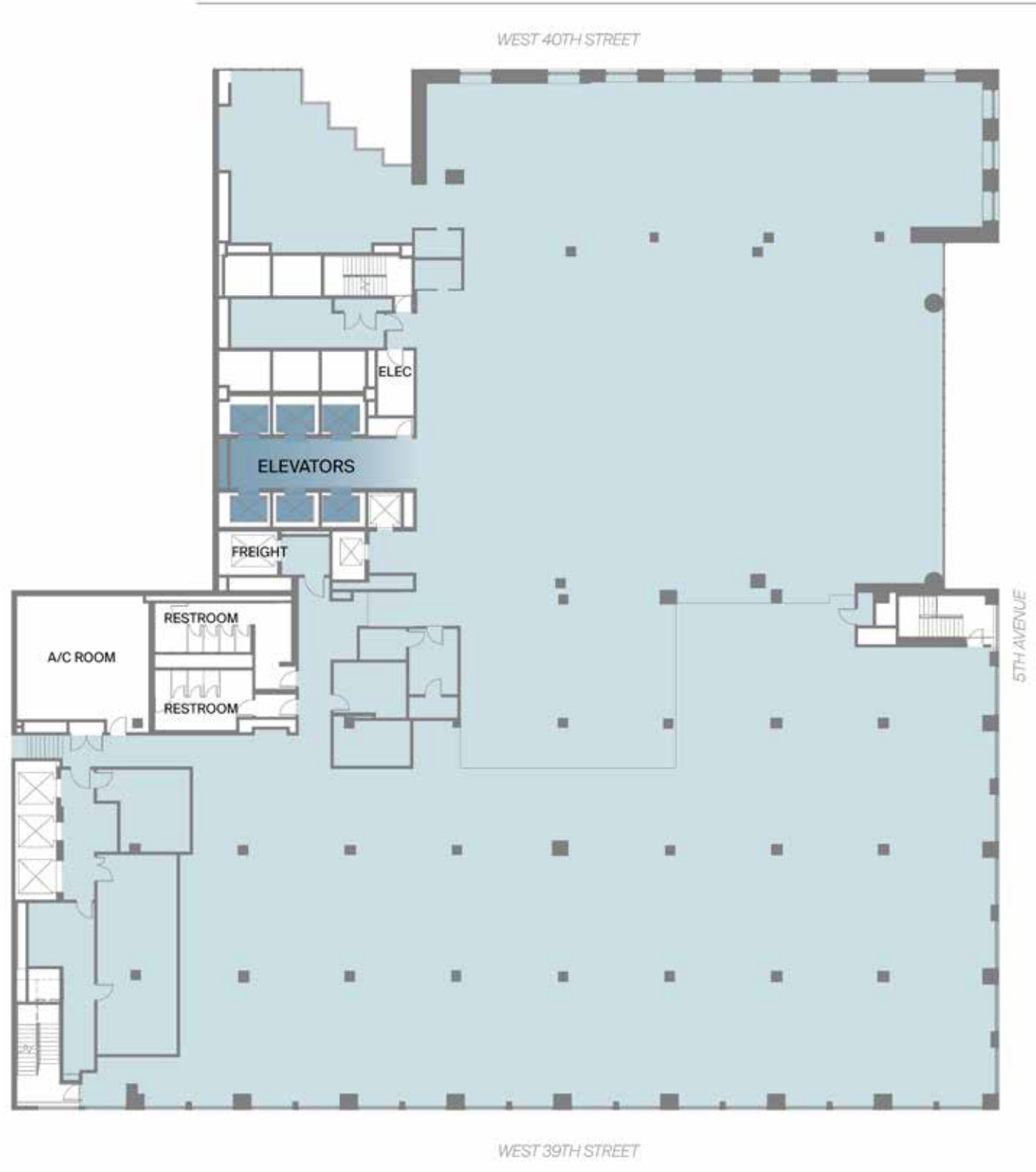
40,433 RSF  
Typical Slab Heights: 13'4"





# FLOOR 8

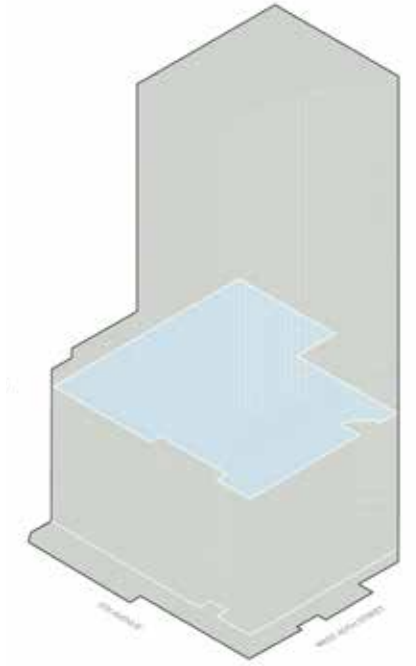
41,603 RSF  
Typical Slab Heights: 13'4"





# FLOOR 9

31,025 RSF  
Typical Slab Heights: 13'4"

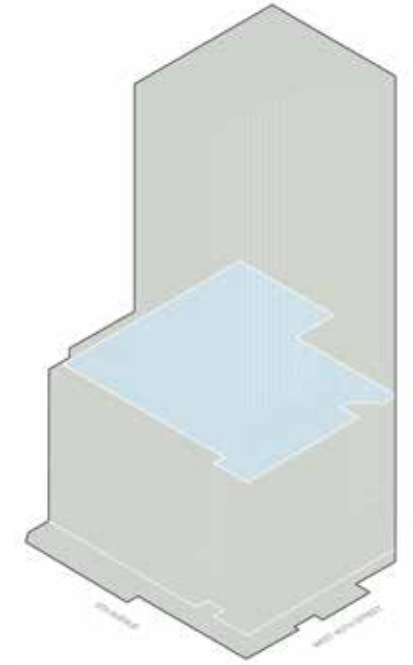






# FLOOR 10

**36,697 RSF**  
Typical Slab Heights: 13'4"

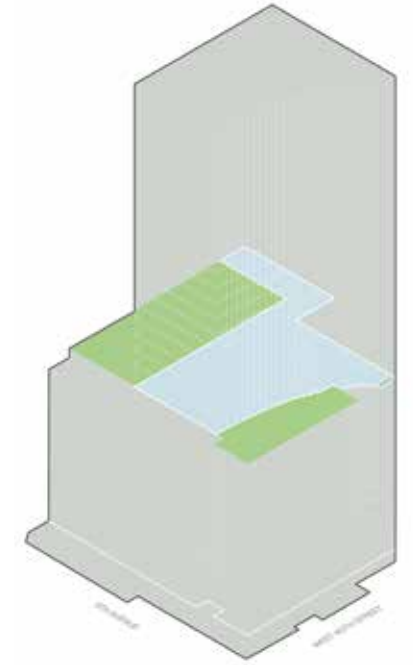




# FLOOR 11

**16,751 RSF**  
Typical Slab Heights: 13'4"

Total Outdoor Space 9,487 SF  
North Terrace 3,178 SF  
South Terrace 6,309 SF





# OF LIKE MINDS



Paul N. Glickman  
Vice Chairman  
O: (212) 418-2646  
Paul.Glickman@jll.com

Benjamin Bass  
Executive Managing Director  
O: (212) 812-6026  
Benjamin.Bass@jll.com

Kristen Morgan  
Senior Vice President  
O: (212) 812-6043  
Kristen.Morgan@jll.com

Kate Roush  
Associate  
O: (212) 812-5714  
Kate.Roush@jll.com

[10bryant.com](http://10bryant.com) | [@10bryant.nyc](https://twitter.com/10bryant.nyc)



# 10

BRYANT

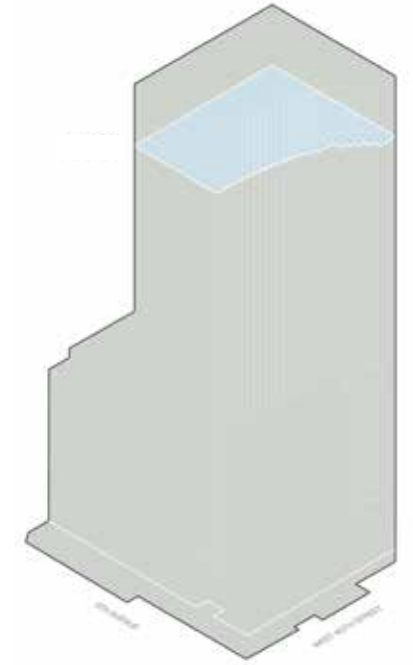
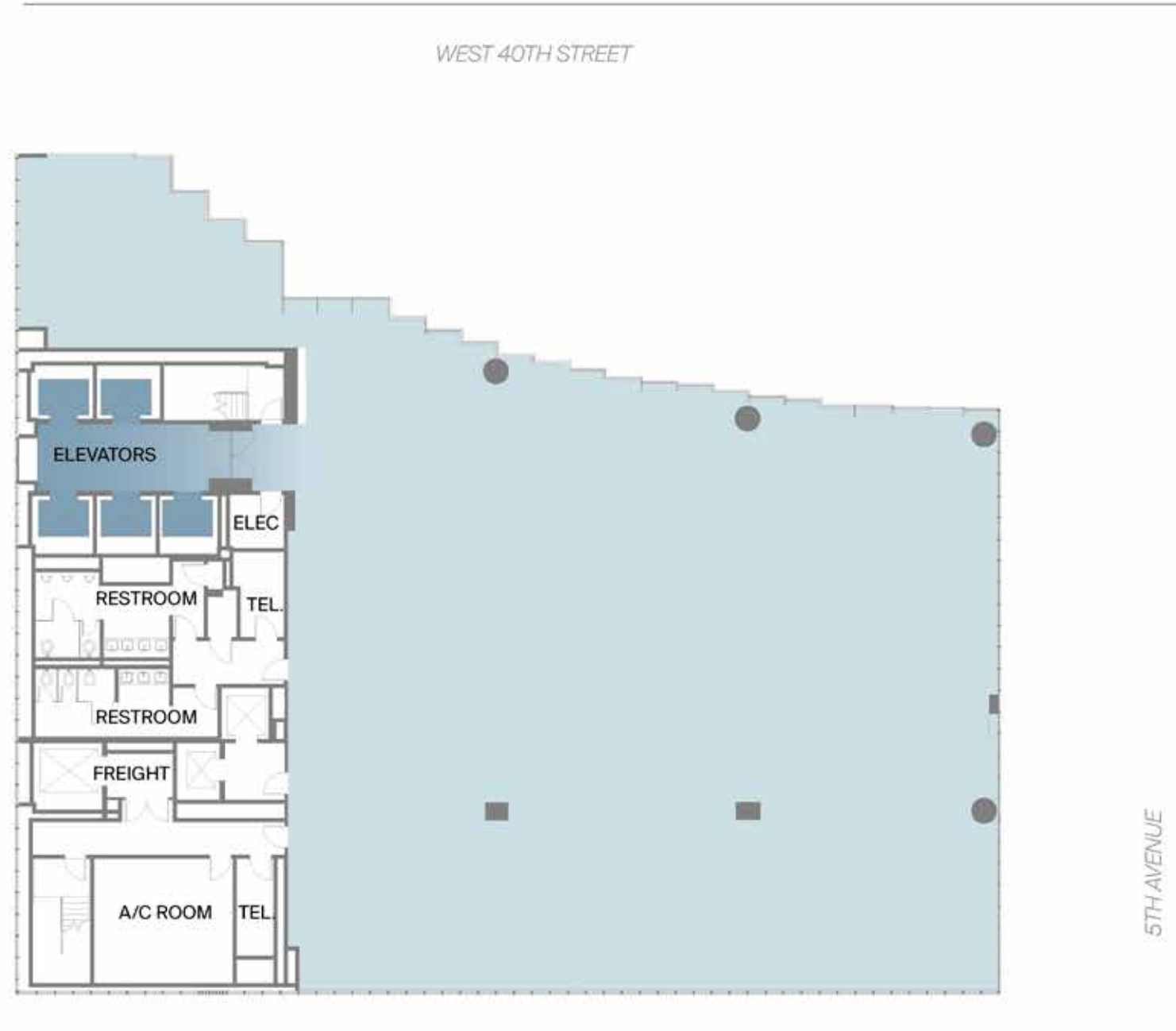
## TYPICAL TOWER FLOOR PLANS

*Located at 452 Fifth Avenue*



# TYPICAL TOWER FLOOR

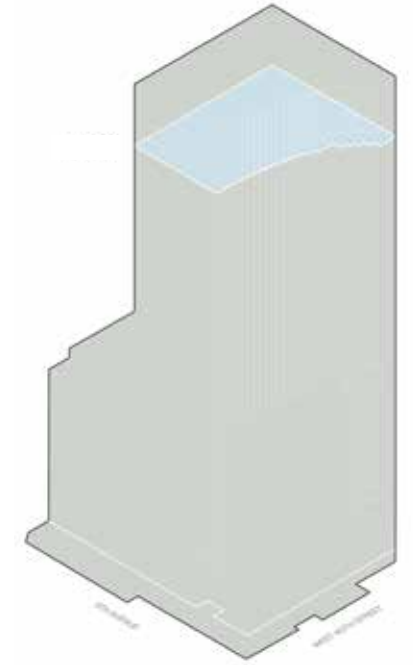
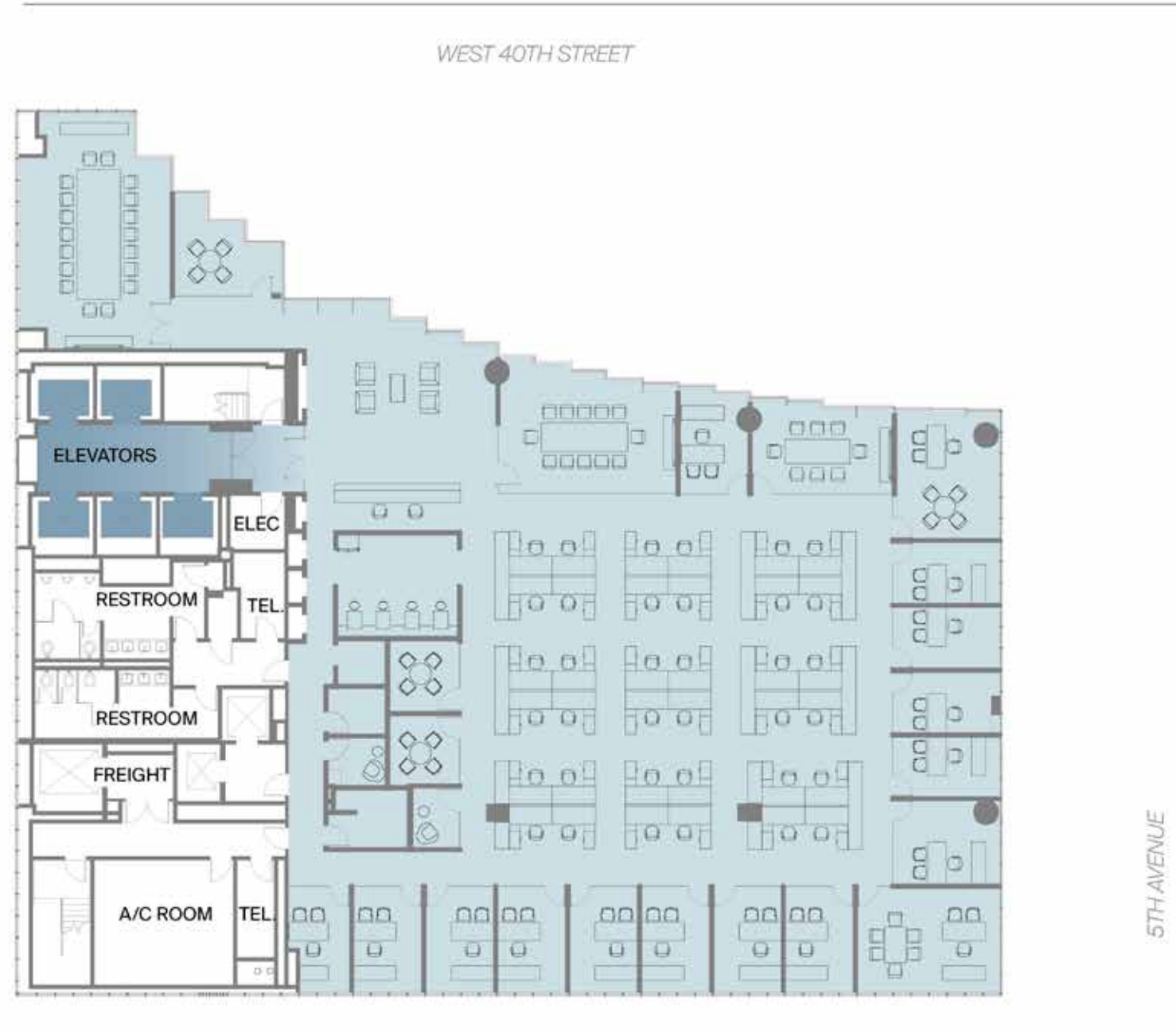
CORE & SHELL





# TYPICAL TOWER FLOOR

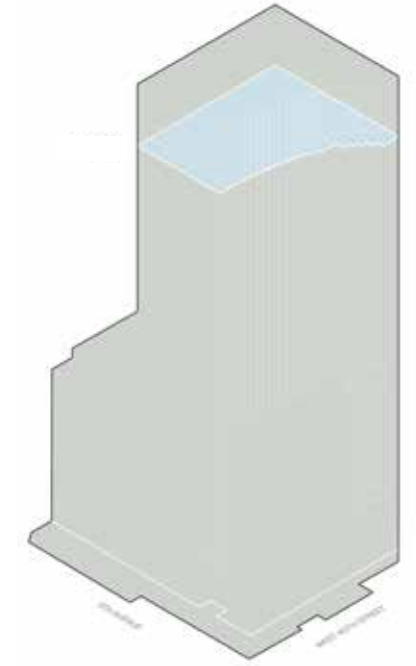
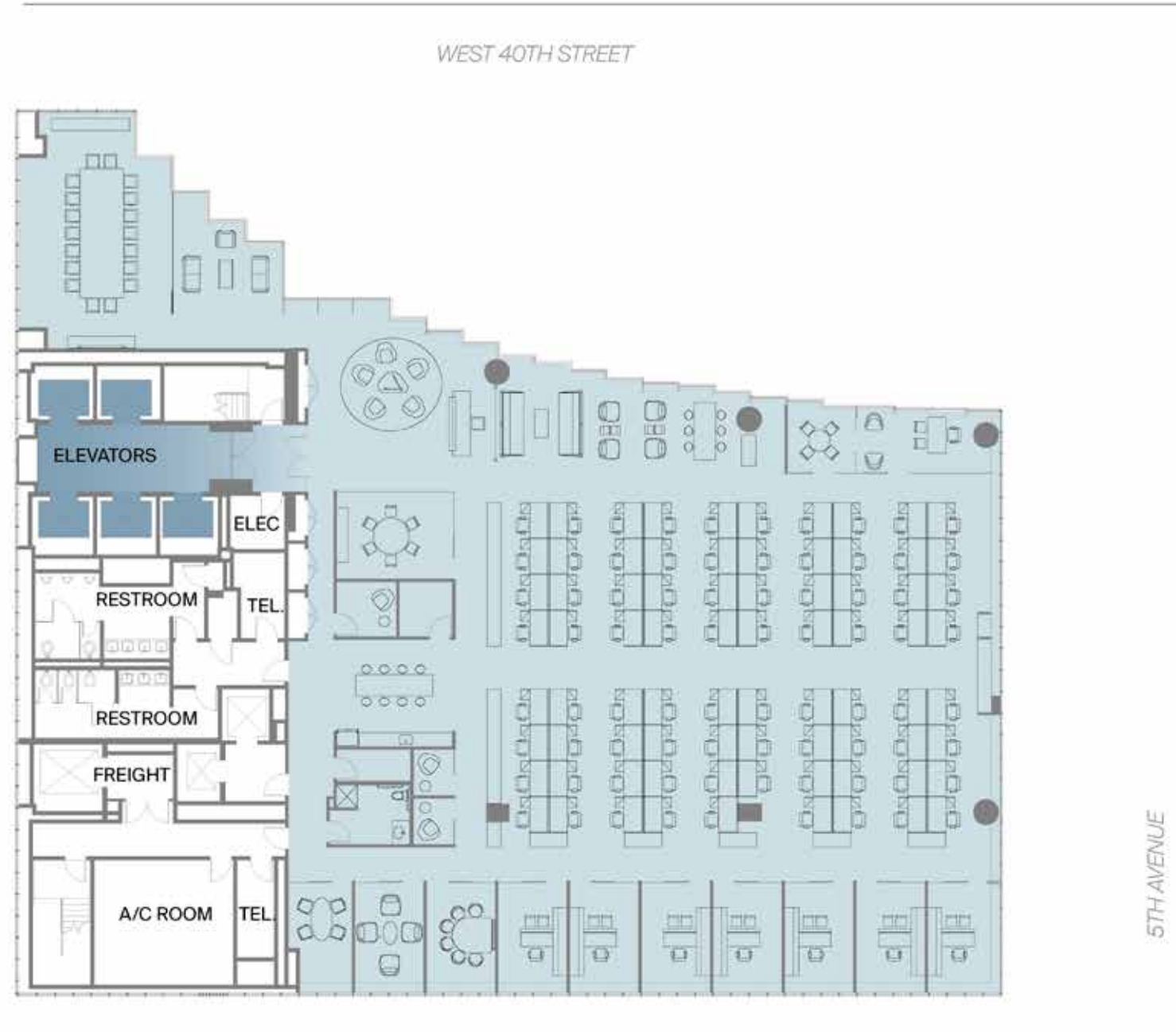
OFFICE INTENSIVE TEST FIT





# TYPICAL TOWER FLOOR

OPEN CREATIVE TEST FIT





# OF LIKE MINDS



Paul N. Glickman  
Vice Chairman  
O: (212) 418-2646  
Paul.Glickman@jll.com

Benjamin Bass  
Executive Managing Director  
O: (212) 812-6026  
Benjamin.Bass@jll.com

Kristen Morgan  
Senior Vice President  
O: (212) 812-6043  
Kristen.Morgan@jll.com

Kate Roush  
Associate  
O: (212) 812-5714  
Kate.Roush@jll.com

[10bryant.com](http://10bryant.com) | [@10bryant.nyc](https://twitter.com/10bryant.nyc)

